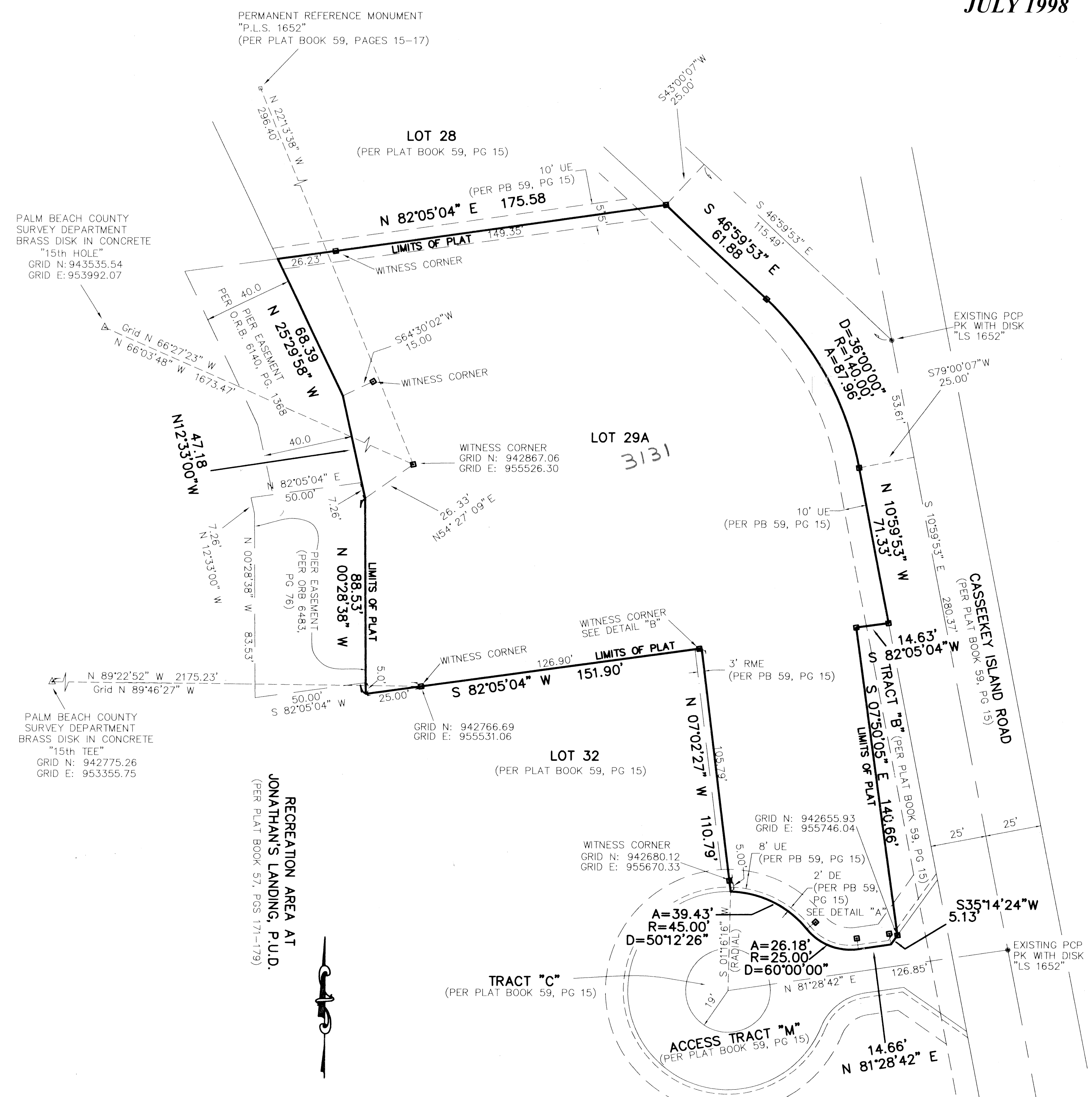
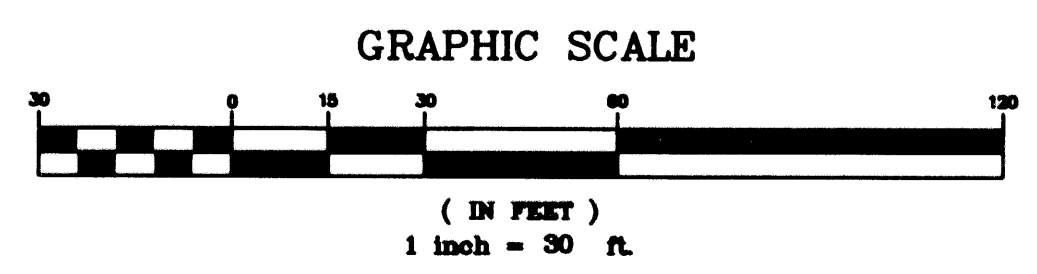
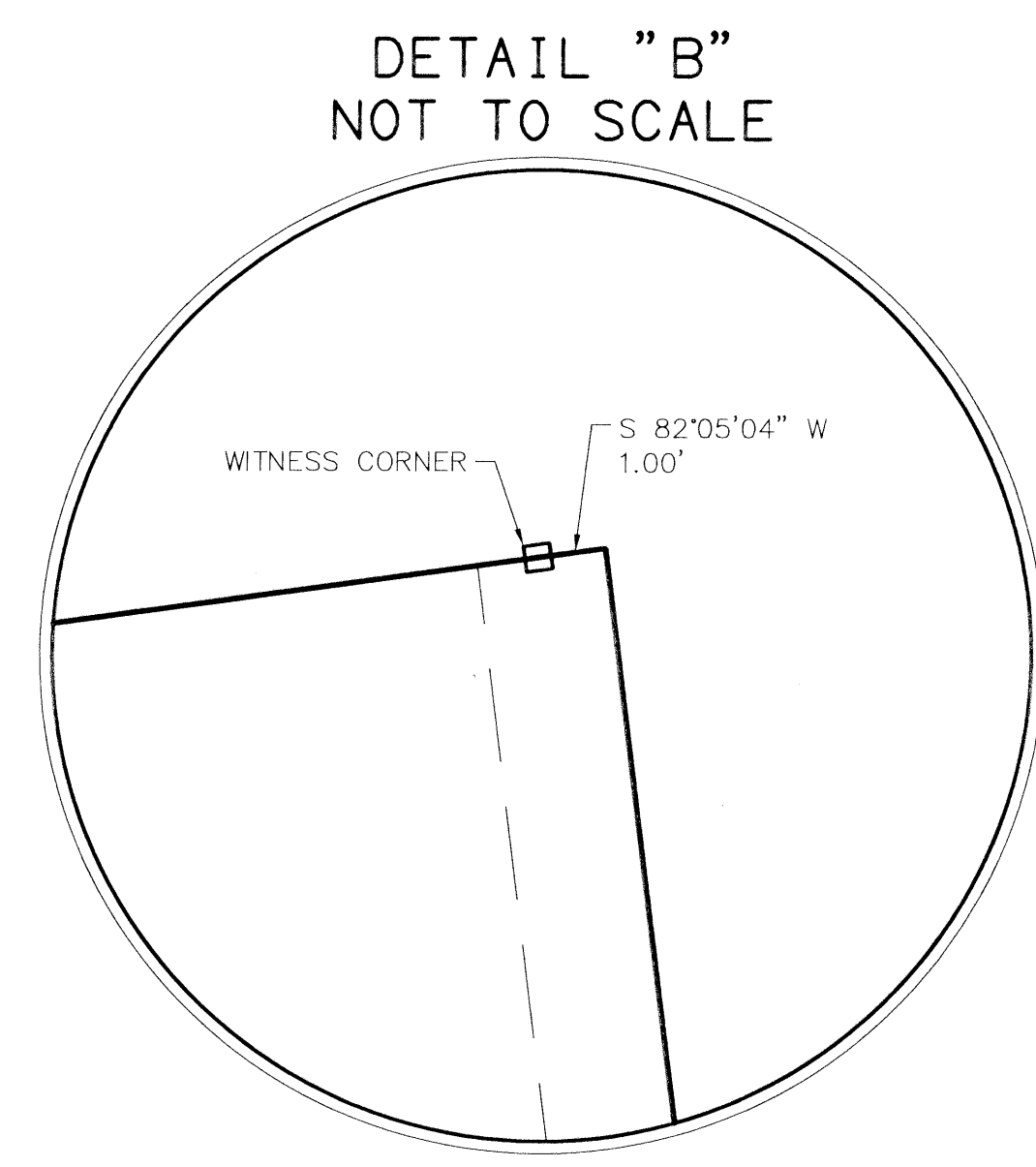
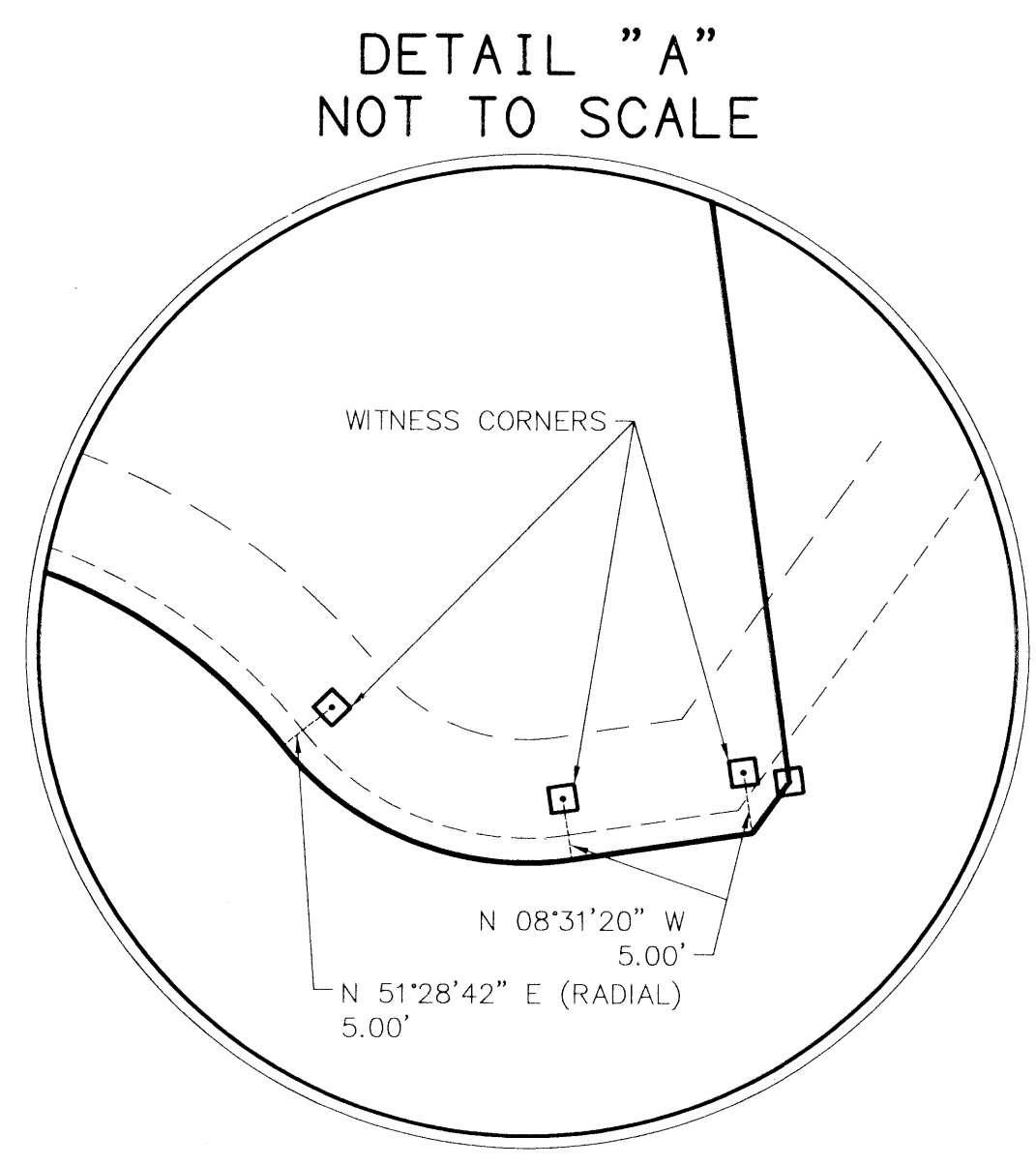


CASSEEKEY ISLAND REPLAT No. 4 AT JONATHAN'S LANDING P.U.D.
 BEING A REPLAT OF LOT 29, PLAT OF CASSEEKEY ISLAND
 AT JONATHAN'S LANDING, P.U.D. AS RECORDED IN PLAT BOOK 59, PAGE 15
 OF THE PUBLIC RECORDS OF PALM BEACH COUNTY, FLORIDA,
 TOGETHER WITH TRACT "A", CASSEEKEY ISLAND REPLAT No. 2 AT JONATHAN'S LANDING
 P.U.D. AS RECORDED IN PLAT BOOK 80, PAGE 17
 OF THE PUBLIC RECORDS OF PALM BEACH COUNTY, FLORIDA,
 IN SECTION 7, TOWNSHIP 41 SOUTH, RANGE 43 EAST,
 PALM BEACH COUNTY, FLORIDA
 SHEET 2 OF 2
 JULY 1998



- LEGEND**
- PCP = PERMANENT CONTROL POINT
 - D = DELTA (CENTRAL ANGLE)
 - R = RADIUS
 - A = ARC LENGTH
 - PB = PLAT BOOK
 - ORB = OFFICIAL RECORD BOOK
 - PG = PAGE
 - PGS = PAGES
 - UE = UTILITY EASEMENT
 - DE = DRAINAGE EASEMENT
 - RME = RECIPROCAL MAINTENANCE EASEMENT



SUBDIVISION: Casseekey Island replat
 BOOK: 03
 PAGE: 134
 FLOOD MAP #: H-50
 QUAD #: 11
 ZONING: RM
 SF: 74,195
 TAG: 45
 FUD NAME: Casseekey Island Replat

SCALE: 1" = 30'	NICK MILLER, INC. Surveying Planning & Development Consultants	DRAWN BY:
DATE: JULY 1998		CHK:
CASSEEKEY ISLAND REPLAT No. 4		
2560 RCA Blvd., Suite 105 Palm Beach Gardens, Florida 33410 (561) 627-5200 D.B.P.R. Business License No. 4318		DRAWING NUMBER 960258-1